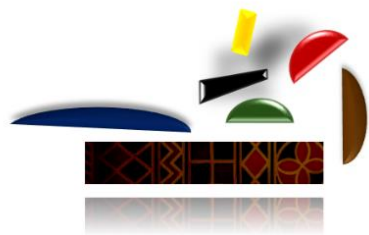


# African American Wellness Hub Advisory Committee (AAWHC)



**March 18, 2026**  
**Committee Meeting**

# AGENDA

**5<sup>th</sup> AAWHC Meeting**

**March 18, 2026**



- **Welcome**
- **Purpose of AAWH Advisory Committee**
- **ACBHD/Community Priorities & Vision**
- **HUB Advisory Rules & Expectations**
- **Care First, Jails Last**
- **Committee Member Check In**
- **Cultural Strategy Update**
- **Public Arts Presentation**
- **Populations to be served**
- **Review Color Palettes**
- **Discussion: AAWH Advisory Recommendations**
- **Review Past Meeting Summaries**
- **Next Steps/Closing**

# Welcome & Review Ground Rules

---



# COMMITTEE GROUND RULES:

The Committee agreed to the following shared norms:

- Maintain respect and do not interrupt speakers.
- Do not assume malicious intent; hold space for learning.
- Uphold constructive dialogue and care-centered conversations.
- Be mindful
- Promote authentic community voice and inclusive participation

# Purpose of the African American Wellness Hub Advisory Committee



# Hub Advisory Committee Purpose:

- The **African American Wellness Hub Advisory Committee** was established (October 2025) by the Department (ACBHD) to provide project specific input into the development of a Hub centering on African American wellness; and co-designed through community input.
  - The initial phase of its convening will serve as a **time-limited body focusing on offering culturally affirming, holistic, and community-based feedback** that will inform design and construction which may be coordinated by ACBHD through General Services Agency (GSA) and other county-contracted construction/design or other related programs.
  - **During this phase, there will be five (5) Hub Advisory Committee meetings between November 2025 and March 2026** (wherein three (3) of the meetings will be In-Person and two (2) meetings will be held virtually).
- **Today's Meeting Deliverable:** Draft Service and Design Recommendations

# Hub Advisory Committee Webinars & Meeting Structure:

- **In addition to In-person events, the African American Wellness Hub Advisory Committee meetings will always be hosted as interactive Zoom webinars, designed to ensure a structured, accessible, and community-centered engagement experience.**
- **Each session will include county department partners** who will be present to listen, support, facilitate guided discussions and exercises, and help to inform future planning efforts while maintaining a smooth and organized session flow.
- **All meetings will incorporate opportunities for Q&A and feedback exchanges.**
- **Community members will be able to listen and ask questions in the chat.**

# ACBHD/Community Priorities & Vision



# African American Wellness Hub Priorities

- Psychiatry Clinic & Medication Support
- Mental Health & Substance Use Treatment and Supports
- Primary Care & integrative Medical Care, Public Health
- Housing Support
- Justice-Involved Supports & Re-Entry Programs
- Employment
- Peer Recovery Programs
- Family Engagement & Navigation Programs
- Elder & Youth Supports
- Navigation & Benefits Coaching, Social Services
- Faith-Based connections
- Culturally-Rooted Wellness Events & Space-Sharing
- Food, Gardening, & Nutrition
- Crisis Services

# Hub Advisory Committee Roles & Expectations



# Hub Advisory Committee Roles & Expectations:



- **Advises, Doesn't Decide** – Provides recommendations and input only; will not make binding decisions or manage operations.
- **Formally Established** – Through the ACBHD organizational application or appointment process.
- **External Experts** – Composed of subject matter experts, stakeholders, or community representatives across Alameda County.
- **Transparent Operations** – Meetings and activities are open to public access and will allow for community-wide input.
- **Focused Mission** – Has clearly defined purpose, goals, and membership guidelines; included time-limited activities.
- **No Legal Liability** – Unlike boards of directors, members have no fiduciary duty, though they're expected to act ethically.

**Phase I  
Wellness  
Hub Advisory  
Committee  
Deliverables:**

**Final  
Presentation &  
Departmental  
Update**

(November 2025 - March 2026)

**Compile Input &  
Recommendations**

**Present Input to  
ACBHD  
Departmental  
Leadership**

**Share Executive  
Summary with  
Advisory  
Committee &  
Stakeholders**

**Recognize and  
Thank Members**

# Updated AAWHC Themes



# Meeting Themes

- Introduction to the African American Wellness Hub Committee
- Understanding the Larger Team and Defining Success
- Program Assessment
- Design and Service Prioritization
- Final Recommendations & Marketing

# Cares First Jails Last (CFJL) Recommendations



# Recommendations

- **1A: African American Resource Center**

- “... develop an African American advisory committee with minimum 50% representation of people with lived experience, including family members, with the goal of identifying necessary services, culturally responsive resources, and to support the expansion and dissemination of funds relative to the Center.”

- **1B: African American Resource Center Information Dissemination**

- “...*information (sic)* should be shared by County and community agencies, including at every step of the criminal legal process (e.g., law enforcement, courts, probation, etc.)

[CFJL Implementation Report](#)

# Committee Member Check-In



# Committee Check-In

## Please state your:

- Name
- Area of Interest
- Prompt: When the Hub opens its doors, what must be in place — in the design, the programs, or the services — for you to say we got it right?"

# Cultural Strategist Update



# Public Arts Commission



# ALAMEDA COUNTY ARTS PUBLIC ART

## PROGRAM

# AFRICAN AMERICAN WELLNESS

## Public Art Project

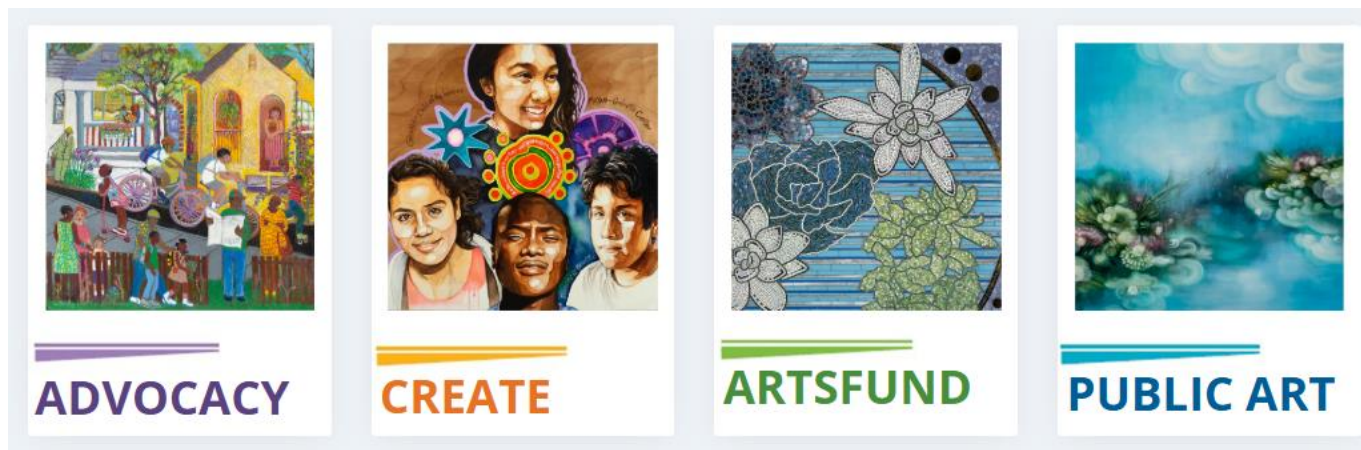
Informational Presentation by  
Rachel Osajima, Director of the Alameda County Arts Commission  
March 2026





The **Alameda County Arts Commission** is a division of the County. The Arts Commission supports all art forms and creative expression such as music, drama, dance, theater, visual, traditional, new media, etc. The activities of the Arts Commission are based on the belief that arts, culture and creativity are essential to our successful and thriving community.

### PROGRAM AREAS



[arts.alamedacountyca.gov](https://arts.alamedacountyca.gov)

# About the Alameda County Arts Commission

## Alameda County Arts Commission

- Established in 1965 by the Alameda County Board of Supervisors.
- Members of the Arts Commission are appointed by the Board of Supervisors.
- The Arts Commission has four full-time staff members who manage the programs.

## Alameda County's Public Art Program & County's Public Art Ordinance

- Established in 1994 by the Alameda County Board of Supervisors.
- The County ordinance requires 2% of eligible construction costs are used for the public art project.
- The funds are used for all costs including the Arts Commission's project administration, payments to professional artists, the fabrication and installation of the artwork, and related expenses.
- The Alameda County Art Collection has over 1,000 artworks placed at 26 County buildings as well as multiple outdoor locations in the unincorporated areas.

## Alameda County Arts Commission's Public Art Program

- The Alameda County Arts Commission is partnering with the Alameda County Behavioral Health Department and Alameda County Health on the public art projects for the African American Wellness Hub.
- The overall goal of the Alameda County Public Art Program is to provide positive, uplifting art experiences and encourage creative expression throughout our community.
- The Public Art Program will support the programs and services of the African American Wellness Hub.
- Community engagement is an essential component of the Public Art Program.

## Alameda County Arts Commission's Public Art Program

- The future art opportunities may include site-specific integrated artworks and the purchase, commission or license of small, medium and large two-dimensional or low-relief wall-mounted artworks.
- Plans for the art sites will be confirmed during the building design phase.
- The Arts Commission has opened a Call for Artists. Artists must submit their applications through the online application system. The application deadline is April 30.
- The Call for Artists is open to practicing, professional visual artists who are 18 years or older and who live, are permanently employed, or rent/own an artist's studio in one of the 9 Bay Area counties: Alameda, Contra Costa, Marin, Napa, Santa Clara, San Francisco, San Mateo, Solano, and Sonoma.

## Alameda County Arts Commission's Public Art Program

- Artists will submit examples of their completed past artworks.
- This is a request for qualifications. Artists will not submit proposals at this point in the process.
- Complete details and requirements are included in the Call for Artists.
- An Artist Selection Committee(s) will review and select the artists and artworks.
- To align with the building construction schedule, artists and artworks may be determined in phases, with early selections in October and November 2026.

# Alameda County Arts Commission's Public Art Program

Opportunities for emerging, mid-career and established artists who:

- Create artworks that reflect and honor African American culture, identity, and the diaspora.
- Create artworks that are positive and uplifting and encourage health, healing, and wellness.
- Want to be a part of creating a welcoming and culturally affirming space where people will feel empowered and treated with dignity.
- Create small, medium and large-scale two-dimensional or low-relief artworks including drawings, paintings, prints, photographs, quilts, textiles, murals, digital artworks, mixed-media artwork, etc.
- Have a range of experience including artists with little or no public art experience as well as artists who have completed major public art commissions.

# Alameda County Arts Commission's Public Art Program

Arts Commission will work with our partners to conduct outreach to visual artists throughout Alameda County and all 9 counties of the Bay Area.

Outreach about the Call for Artists will include press releases, email announcements, newsletters, social media posts, flyers and more.

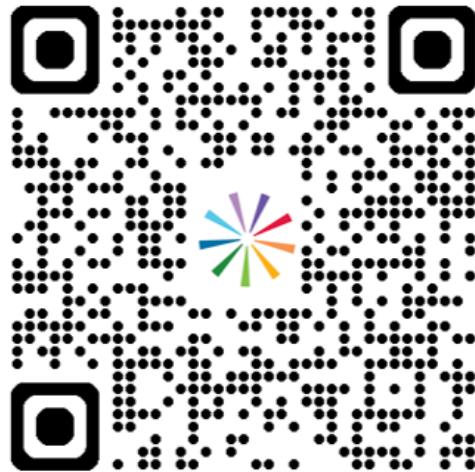
Please help share this information!



# Alameda County Arts Commission's Public Art Program

To see the complete Call for Artists, a link to the online application, and to watch an informational video, visit Alameda County Arts Commission's website

[arts.acgov.org/public-art-updates](https://arts.acgov.org/public-art-updates)



# Alameda County Arts Commission's Public Art Program

For questions about the Alameda County Arts Commission's Public Art Program and this project, please visit [arts.alamedacountyca.gov/public-art-updates](https://arts.alamedacountyca.gov/public-art-updates) or email [artscommission@acgov.org](mailto:artscommission@acgov.org) or call 510-208-9646.

**Thank you!**



**Behavioral Health  
Department**  
Alameda County Health

# Populations and Services



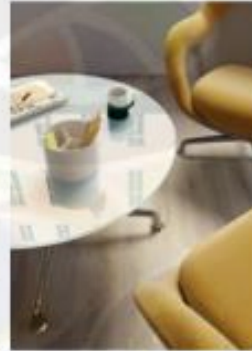
# Discussion Questions

- **ACTIVITY:** List the focus areas for the African American Wellness Hub initial phase, and what specific needs should the Hub address for these areas?
- In addition to Psychiatry, what services the Hub should have on day one to make an immediate impact in our community?
- What services gaps exist in our community today, and how can the Hub address these gaps?
- How do we balance offering a wide range of services while doing things exceptionally well?

# Review Color Palettes



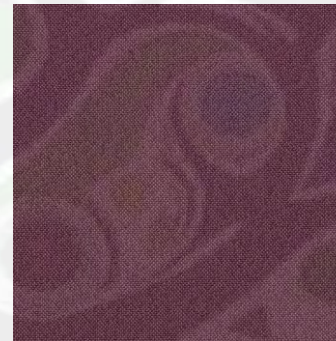
# Community Space Idea 1 : Rich Purples and Bright Accents



# Community Space Idea 1 : Rich Purples and Bright Accents



Paint



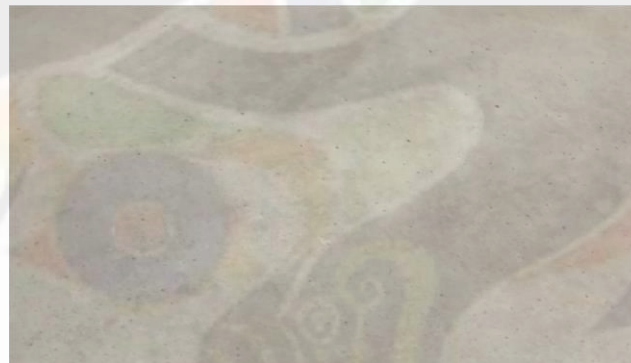
Textiles  
(Acoustic +  
Upholstery)



Wood Veneer (Ebony)

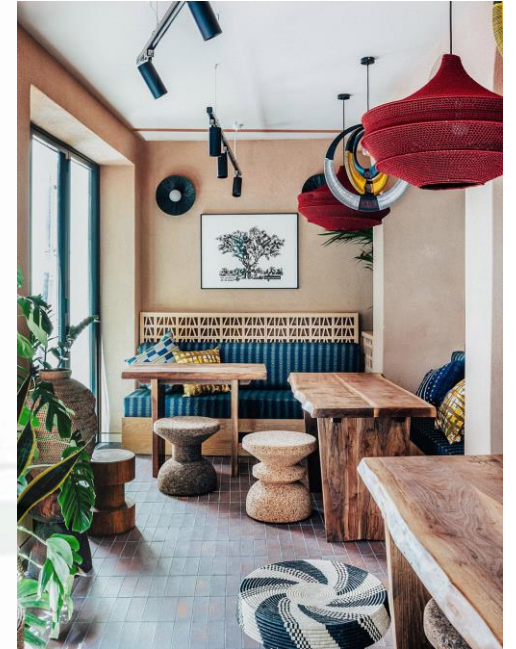


Accent Colors (paint  
& cabinet doors)



Concrete Floor

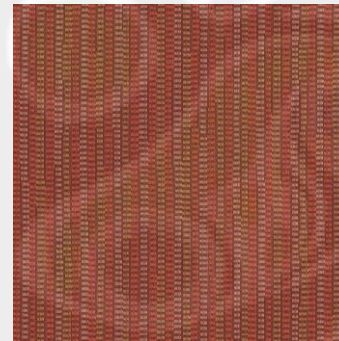
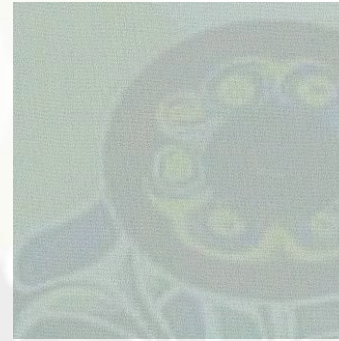
# Community Space Idea 2 : Jewel Tones on Shades of Gold



# Community Space Idea 2 : Jewel Tones on Shades of Gold



Paint



Textiles  
(Acoustic +  
Upholstery)



Wood Veneer (Oak)



Accent Colors (paint  
& cabinet doors)

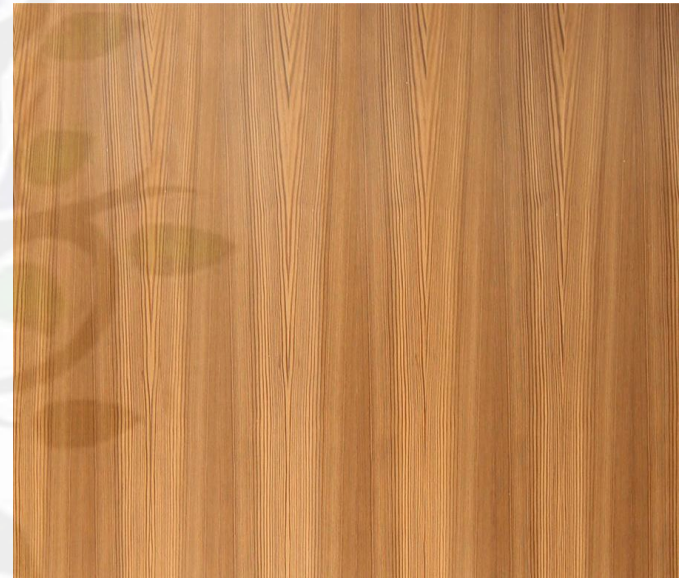
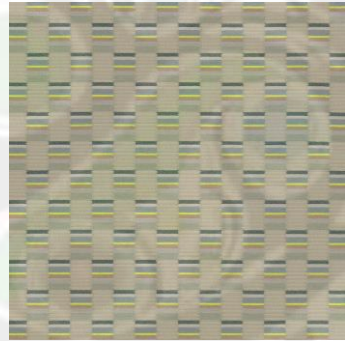


Carpet

# Clinical Spaces Idea 1 : Warm and Light



# Clinical Spaces Idea 1 : Warm and Light



Paint

Textiles  
(Acoustic +  
Upholstery)

Wood Veneer  
(Larch)

Carpet

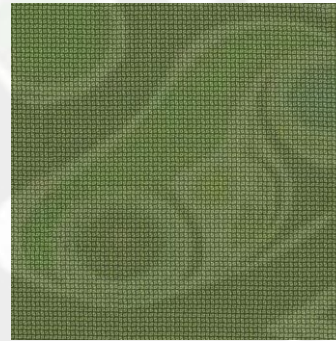
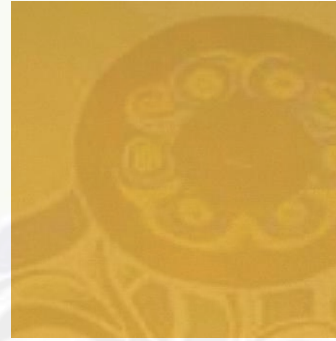
# Clinical Spaces Idea 2 : Yellows and Greens



# Clinical Spaces Idea 2 : Yellows and Greens



Paint



Textiles  
(Acoustic +  
Upholstery)



Wood Veneer  
(Walnut)

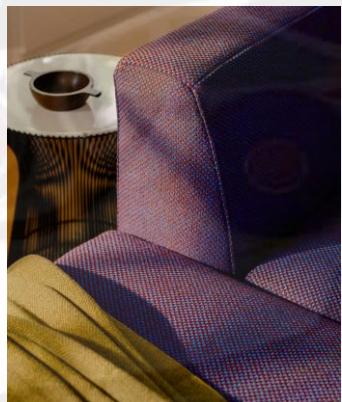
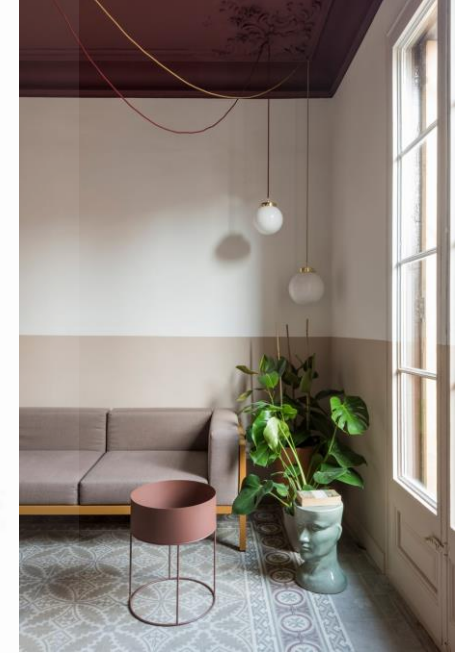


Carpet



Inspirations

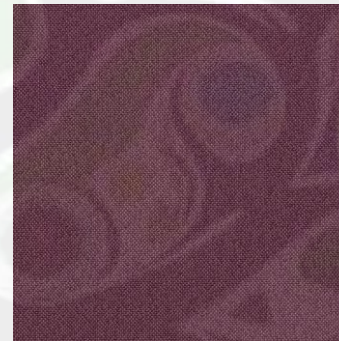
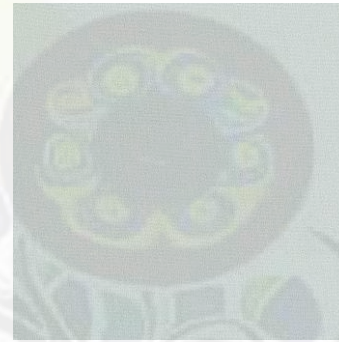
# Community Space Idea 1 : Rich Purples and Bright Accents



# Community Space Idea 1 : Rich Purples and Bright Accents



Paint



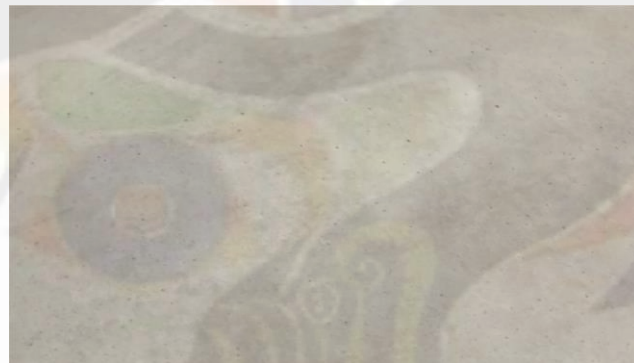
Textiles  
(Acoustic +  
Upholstery)



Wood Veneer (Ebony)

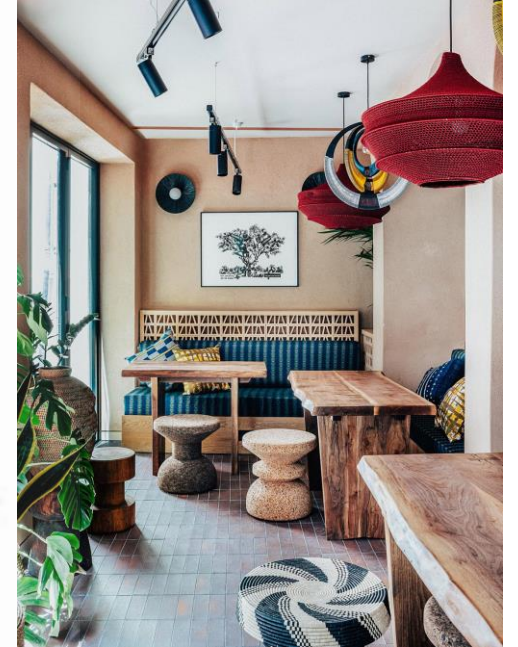


Accent Colors (paint  
& cabinet doors)



Concrete Floor

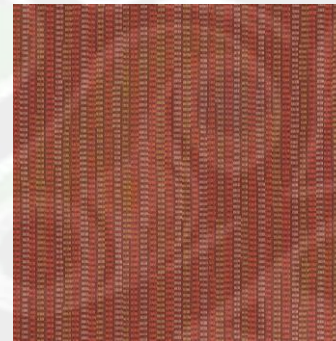
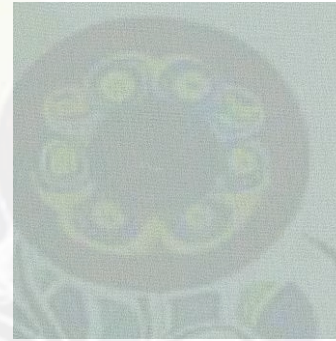
# Community Space Idea 2 : Jewel Tones on Shades of Gold



# Community Space Idea 2 : Jewel Tones on Shades of Gold



Paint



Textiles  
(Acoustic +  
Upholstery)



Wood Veneer (Oak)



Accent Colors (paint  
& cabinet doors)

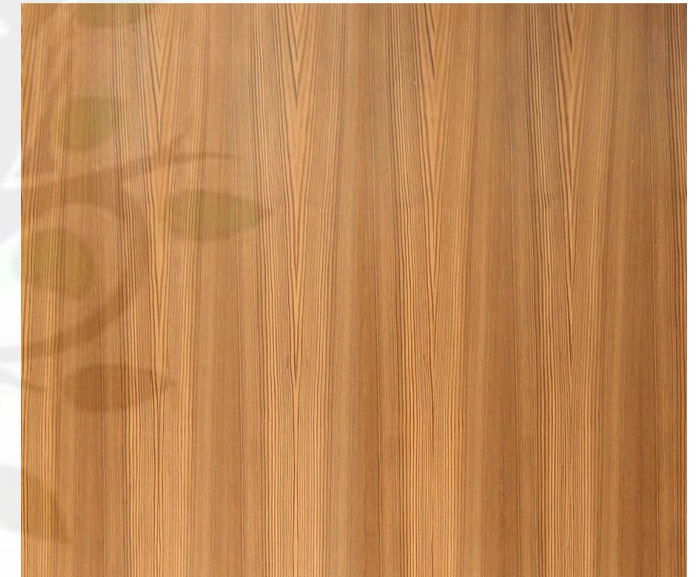
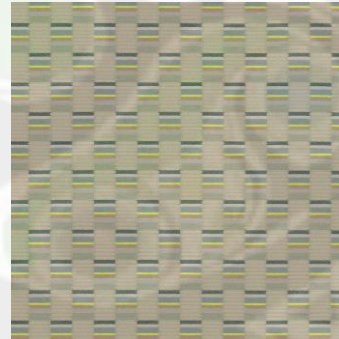
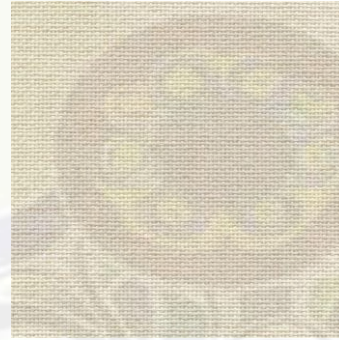


Carpet

# Clinical Spaces Idea 1 : Warm and Light



# Clinical Spaces Idea 1 : Warm and Light



Paint

Textiles  
(Acoustic +  
Upholstery)

Wood Veneer  
(Larch)

Carpet

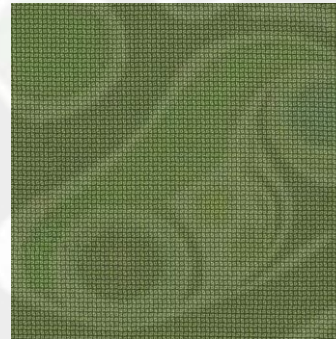
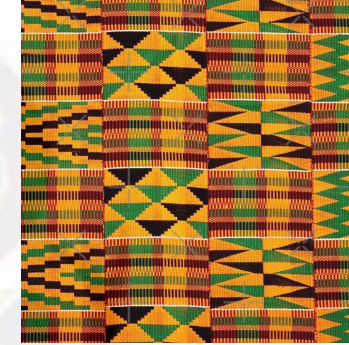
# Clinical Spaces Idea 2 : Yellows and Greens



# Clinical Spaces Idea 2 : Yellows and Greens



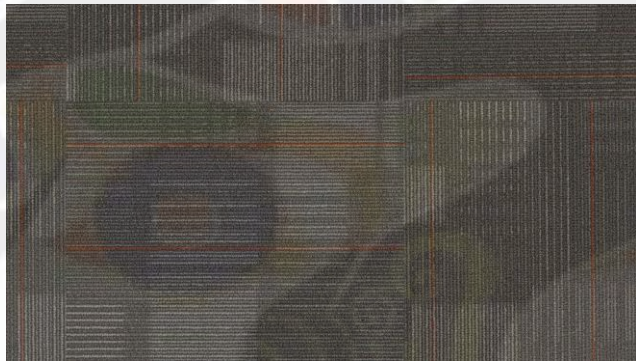
Paint



Textiles  
(Acoustic +  
Upholstery)

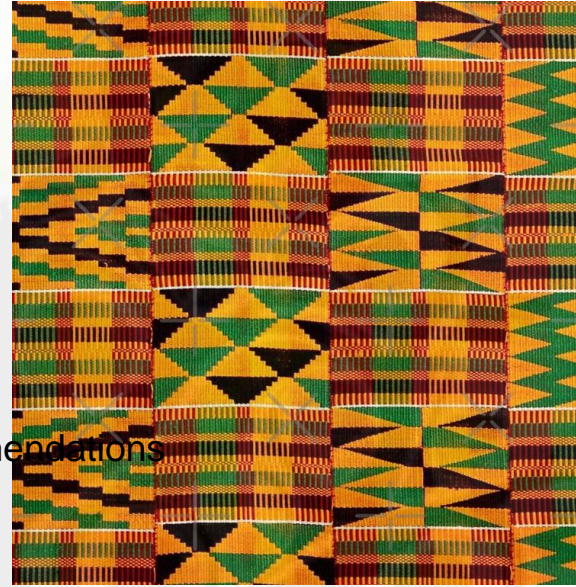


Wood Veneer  
(Walnut)



Carpet

Discussion: AAWH Advisory Recommendations



Inspirations

# Discussion: AAWH Advisory Recommendations



# Discussion Questions

- After reviewing the proposed color palettes which options best reflect the identity and cultural experience of the African American community in Alameda County?
- What **marketing and outreach** strategies should be used to effectively inform and engage African American residents about the Wellness Hub?
- What approaches should Alameda County implement to ensure strong community engagement during the Hub's launch and ongoing programming?
- **ACTIVITY:** As we finalize our recommendations, what is the one thing you want to make sure we don't leave out?

# Meeting Summaries



# November Meeting Summary

## Theme: Priorities and Vision

### Why is a Culturally Centered Hub Important?

A safe, trusted space shaped by African American lived experiences. Designed with care, clear language, and cultural alignment that supports healing and celebrates identity. Culturally aligned providers build trust and stronger connections. Long-term commitment to community growth, individual healing, and collective freedom. A supportive place offering care and accountability instead of punishment, with attention to the social factors that affect health.

### AFRICAN AMERICAN WELLNESS HUB ADVISORY COMMITTEE

### VISION MAP

### Strengths the Hub Will Uplift

Holistic wellness and accessible healing. Proactive support not crisis-dependent. Community voice through focus groups, art projects, youth and elder activities, and feedback loops. Uplift African American practitioners grounded in recovery and purpose. Collectiveness, divine essence, African heritage and worldview. Cooperative healing, restoration, and collaboration. Culturally relevant practices including music, drumming, dance, rites of passage, and storytelling. Eastern medicine, herbology, martial arts, self-love, confidence, self-discovery, and cultural healing. Community development and land and property acquisition.

### PRIORITY POPULATIONS

Youth, children, families, elders, LGBTQ community members. Homeless and unemployed individuals. Veterans, behavioral health populations, domestic violence survivors. Chronically ill individuals. Neurodivergent community members including ADHD and Autism.

### WHAT SHOULD THE HUB FEEL LIKE?

Welcoming, accessible, trauma-informed, and dignity-centered. Healing-centered, not trauma-centered. Home-like, warm, non-clinical. Peaceful, clean, empowering, and mindful. Family-friendly and accessible. Encouraging, inviting, comforting, and hopeful. Respectful and healthy. Feels like a fresh start. Natural, culturally rich, spiritually grounded, and reflective of the African diaspora.

### ESSENTIAL PARTNERSHIPS

Black-led community-based organizations. Faith institutions. Philanthropy and Black-owned businesses. Psychiatry, primary care, and behavioral health providers. Non-traditional and natural healers. Personal trainers, yogis, sound healers, Zumba instructors. Schools (K-12 and community colleges). County services, museums, youth services, homeless services. Artists, cultural institutions, frontline healers. Equity-focused funders. Elder care providers, educators, midwives and doulas. Farmers, chefs, nutritionists. Unemployment offices and community employers



# December Meeting Summary

## Theme: Design Ideas

- Create a space design grounded in dignity, accessibility, safety, and inclusivity, reflecting surrounding community context
- Design space with natural light, windows, and welcoming entry points prioritized to support all community members
- Committee consensus: Art, flexible programming, and culturally affirming design are core — not optional — features of the Wellness Hub.

# January Meeting Summary

## Theme: Design and Service Prioritization

### VISION & GUIDING PRINCIPLES:

- Space grounded in dignity, safety, accessibility, and inclusivity
- Culturally responsive and restorative—not crisis-defined
- Welcoming and non-stigmatizing (home-like, not clinical)
- Wellness, defined as physical, emotional, spiritual, cultural, & communal well-being

### DESIGN PRIORITIES:

- Natural light and open floor plans
- Flexible multi-use and reflection spaces
- Confidential offices and open gathering areas
- Public art, barrier-free library, and teaching kitchen
- Adequate storage for long-term functionality

# January Meeting Summary

## Theme: Design and Service Prioritization Cont.

### PROGRAMMATIC DIRECTION:

- Teach self-care, mindfulness, and healthy living skills
- Integrate effective existing services (e.g., food justice, youth, mental wellness)
- Reintroduce traditional & Ancestral healing practices
- Support families and community—not only individuals
- Elevate cooking and life skills as foundations of dignity and self-sufficiency

# February Meeting Summary

## Theme: Design and Service Recommendations

### Culturally Affirming Architecture

- African symbols & diasporic design elements
- Circular architectural forms
- Murals by local Black artists
- Exterior reflecting cultural pride

### Intergenerational Accessibility

- Adjacent quiet spaces for elders
- Separation of youth activity areas
- Large readable signage
- Non-slip flooring & automatic doors

### Healing Environment & Lighting

- Natural light via skylights & light towers
- Warm, inviting light temperatures
- Adjustable lighting for meditation rooms
- Plants & soft colors for well-being

### Future-Ready & Hybrid Programming

- Hybrid virtual & in-person programming
- Youth leadership & tech integration
- Design adaptable for emerging health tech

# February Meeting Summary Cont.

## Non-Negotiable Design Principles

- Inclusion of Black contractors and Black-owned firms
- Black-centered identity preserved in governance and design
- Most impacted individuals centered in all decision-making

## Public Comment Highlights

- Prioritize those most impacted by health disparities
- Advance African American wellness with a proactive and empowering approach
- Ensure dignity, empowerment, and cultural authenticity in the final design

# Next Steps & Closing



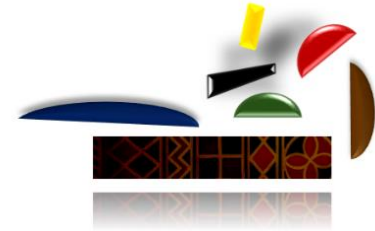
# Next Steps:

- Draft Final Advisory Recommendations and report and Presentation



Centering  
African American  
Health & Wellness

# Questions, Comments, or Input?





Thank you.

Tilling & Seeding: The journey continues.