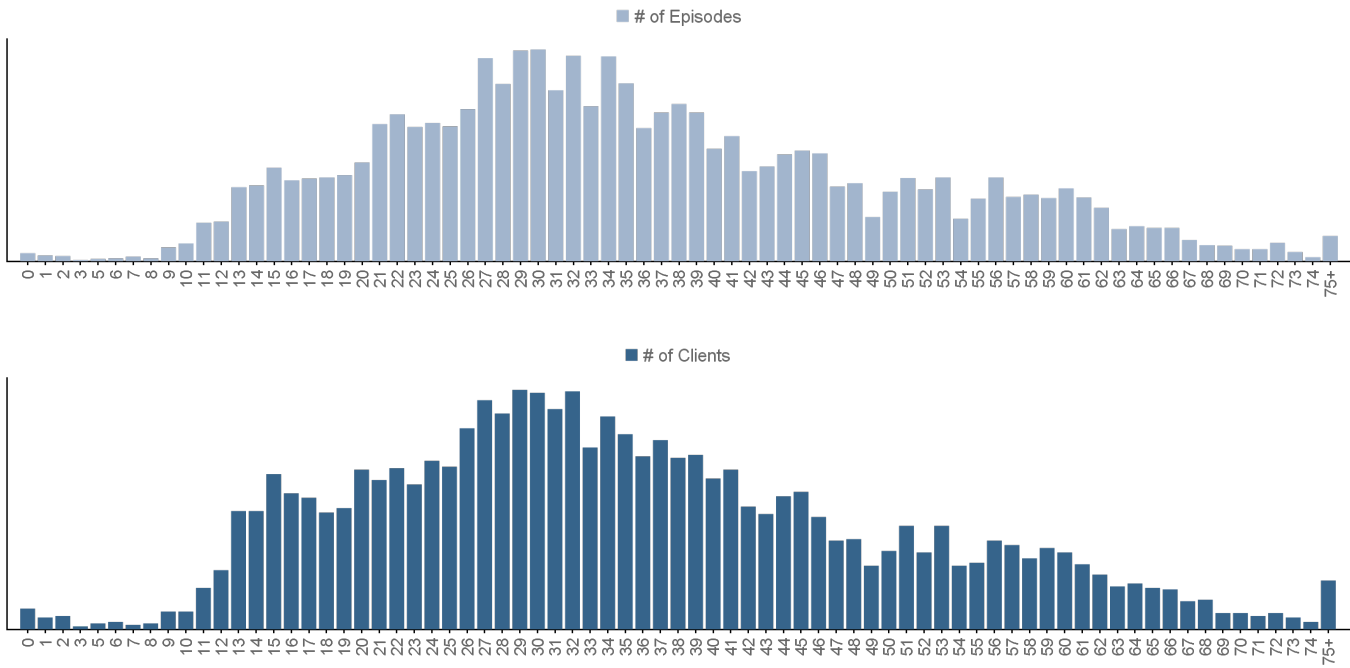


# Involuntary Holds Trend Episodes and Clients -- Age

Question: By age, how many involuntary holds were there by episode and client count?



Fiscal Year	Age at Episode Open	# of Episodes	% of Episodes	# of Clients	% of Clients
FY 2021-2022	0	14	0%	14	0%
	1	10	0%	8	0%
	2	9	0%	9	0%
	3	2	0%	2	0%
	5	4	0%	4	0%
	6	5	0%	5	0%
	7	8	0%	3	0%
	8	5	0%	4	0%
	9	24	0%	12	0%
	10	31	0%	12	0%
	11	67	1%	28	1%
	12	69	1%	40	1%
	13	129	1%	80	2%
	14	132	1%	80	2%
	15	163	2%	105	2%
	16	141	1%	92	2%
	17	144	1%	89	2%
	18	146	1%	79	2%
	19	150	1%	82	2%
	20	172	2%	108	2%
	21	239	2%	101	2%
	22	256	2%	109	2%
	23	234	2%	98	2%
	24	241	2%	114	2%
	25	235	2%	110	2%
	26	265	3%	136	3%
	27	354	3%	155	3%
	28	309	3%	146	3%
	29	367	3%	162	3%
	30	369	3%	160	3%
	31	298	3%	149	3%
	32	358	3%	161	3%
	33	270	3%	123	2%
	34	357	3%	144	3%
	35	310	3%	132	3%
	36	232	2%	117	2%
	37	259	2%	128	3%
	38	274	3%	116	2%

Fiscal Year	Age at Episode Open	# of Episodes	% of Episodes	# of Clients	% of Clients
	39	259	2%	118	2%
	40	196	2%	102	2%
	41	218	2%	108	2%
	42	157	1%	83	2%
	43	165	2%	78	2%
	44	186	2%	90	2%
	45	193	2%	93	2%
	46	188	2%	76	2%
	47	130	1%	60	1%
	48	136	1%	61	1%
	49	77	1%	43	1%
	50	121	1%	53	1%
	51	145	1%	70	1%
	52	125	1%	52	1%
	53	146	1%	70	1%
	54	74	1%	43	1%
	55	109	1%	45	1%
	56	146	1%	60	1%
	57	112	1%	57	1%
	58	116	1%	48	1%
	59	110	1%	55	1%
	60	127	1%	52	1%
	61	111	1%	44	1%
	62	93	1%	37	1%
	63	56	1%	29	1%
	64	61	1%	31	1%
	65	58	1%	28	1%
	66	58	1%	27	1%
	67	37	0%	19	0%
	68	28	0%	20	0%
	69	27	0%	11	0%
	70	21	0%	11	0%
	71	21	0%	9	0%
	72	32	0%	11	0%
	73	16	0%	8	0%
	74	7	0%	5	0%
	75+	44	0%	33	1%
		10,558	100%	5,057	100%