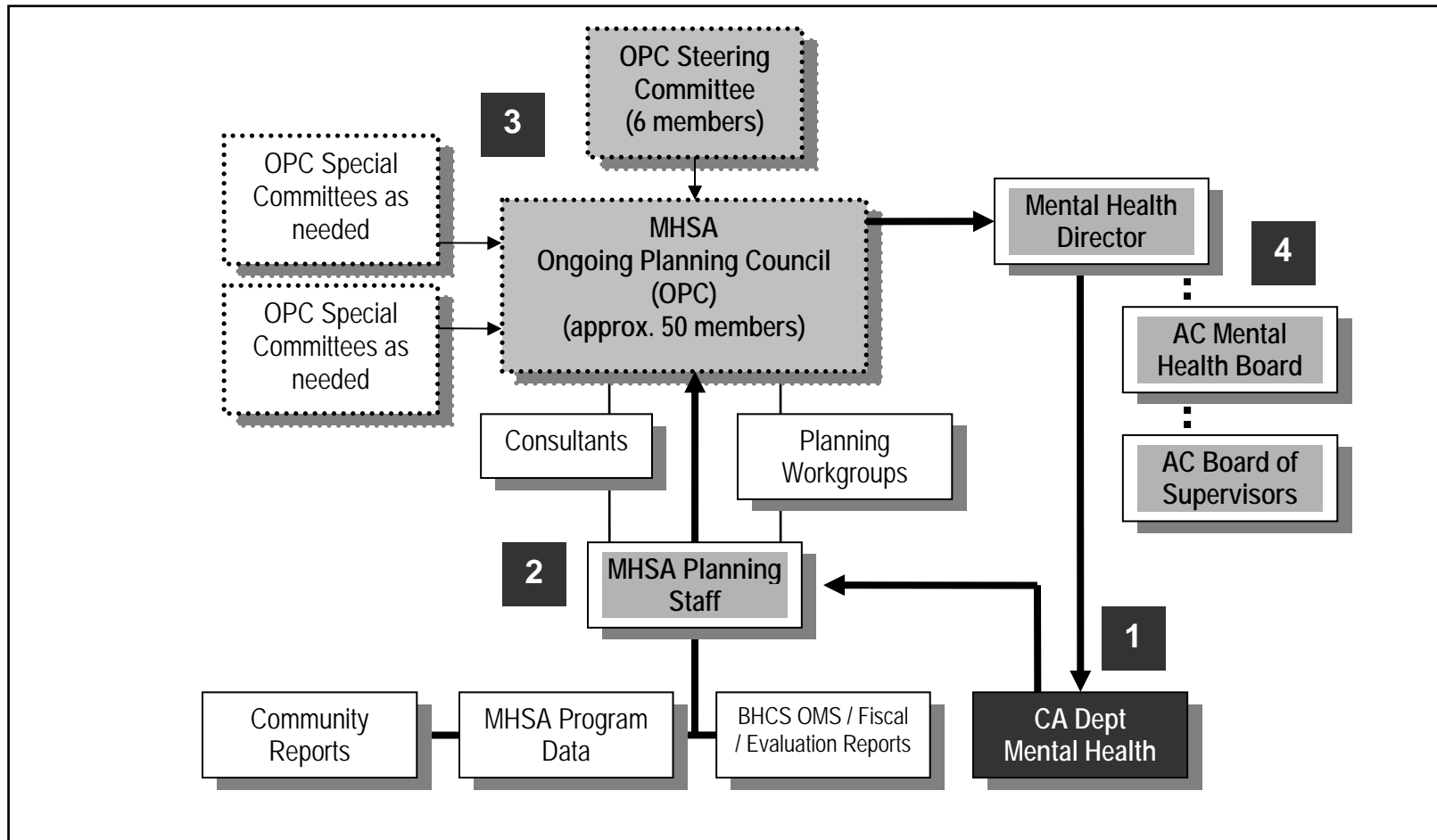


# Alameda County Mental Health Service Act (MHSA) Ongoing Planning Council (OPC) Structure



1. **CA Dept of Mental Health**– issues MHSA requirements regarding annual updates and new funding streams to Alameda County BHCS.
2. **MHSA Planning Staff** – will present requirements and initial findings and analyses on all relevant data from various internal and external sources to the OPC. Consultants and Planning Workgroups will conduct planning as needed and present their findings to MHS staff and the OPC.

3. **Ongoing Planning Council** – will organize special Committees to research and discuss specific issues and bring in additional expertise as needed. The Steering Committee will help to frame discussions and develop agendas.
4. **Mental Health Director** – will receive recommendations from the OPC and submit final plans to CA Dept of Mental Health after presentations and public hearings hosted the Alameda County Mental Health Board and Board of Supervisors.